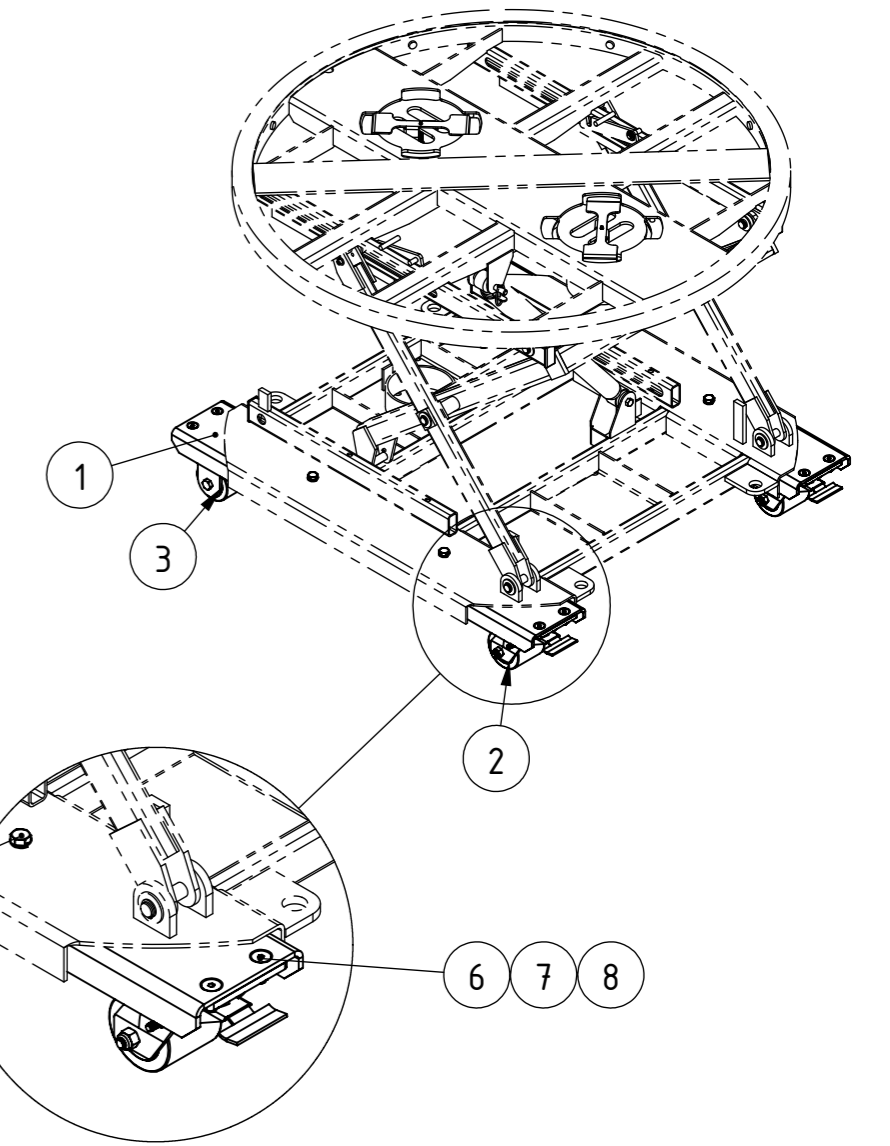
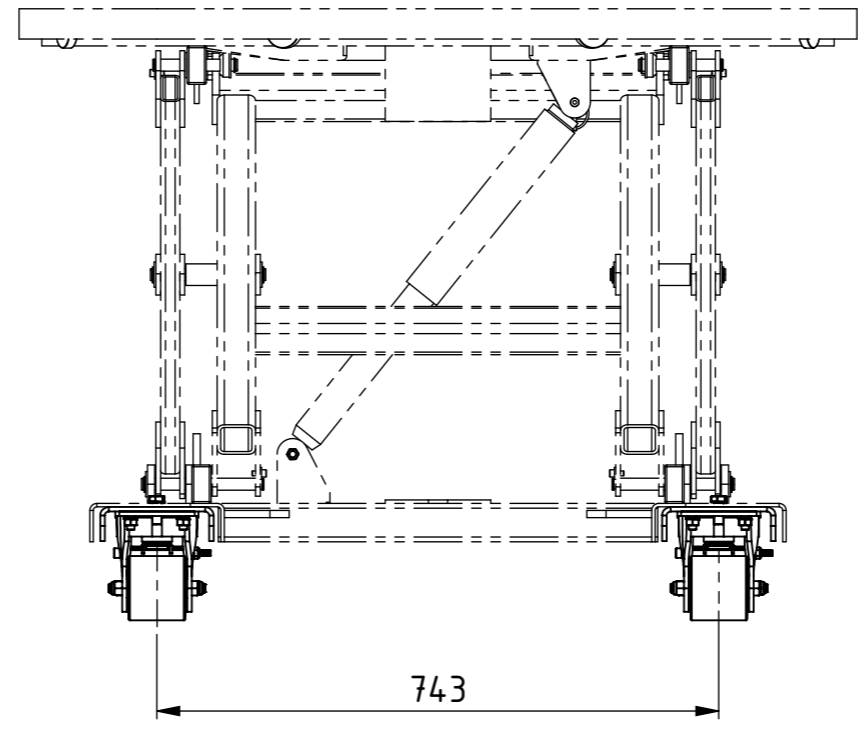
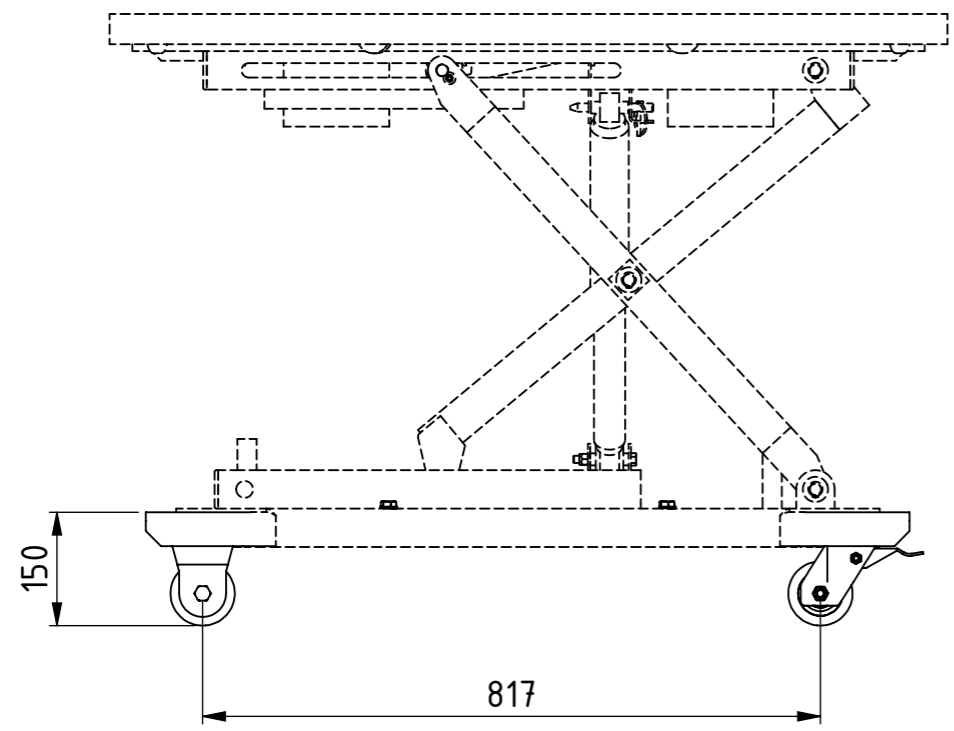
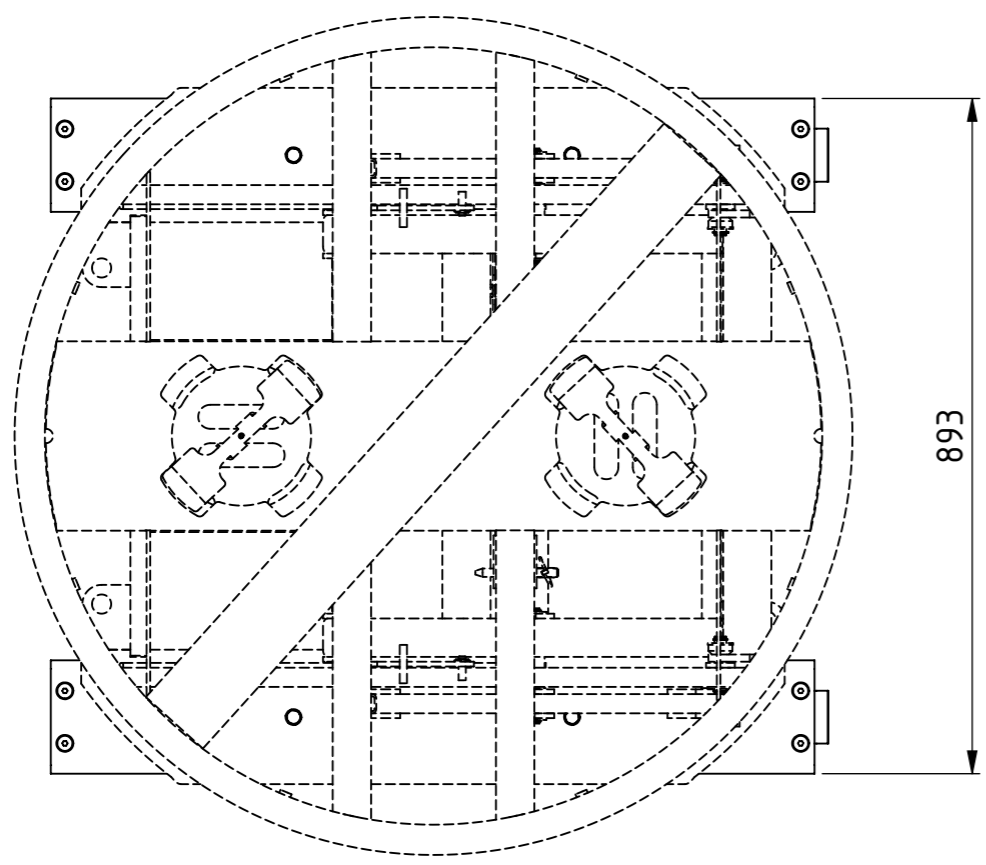


Rev	Note	Date	Designer
B	PALLRTPAL AND FASTENERS SHOWN	2018-01-18	MBY



B 2 : 15



Item	Qty	Art No	Dwg No	Description	Material	Size/Dimension	Type	Kg/pcs
8	16	444195		WASHER	FZB	FBH 10,2x18,1x1,8	DIN 128A	
7	16	444250_10		NUT	8FZB	M6M 10	DIN 934	
6	16	444510_30		SCREW MF6S	8.8 FZB	M10x30	DIN 7991	
5	4	444112_30		SCREW M6S	8.8 FZB	M12x30	ISO 4014	
4	4	444196		WASHER	FZB	FBH 12,2x21,1x2,1	DIN 128A	
3	2	1116382		WHEEL		STATIC		0.4
2	2	1116381		WHEEL		LINKED		5.8
1	2	1116418	1116418	SUB FRAME				10.3

ISO Method E Indicates Ra in µm Unless otherwise specified tolerances according to ISO 2768-mK (medium)	WHEEL SUB FRAME FOR PALLET PALL SPRING LEVEL LOADER		Date	2017-07-17	Total Weight (kg)	33.8	
			Designer	LSI	Approved by	CJF	
			Scale	1:10	Sheet	1 / 1	
			Control Specification No.		Art. No.	1116421	
Drawing Type	Machining	Status	Approved	Drawing No.	1116421	Revision	B

No measuring allowed on this document.

This document is our property and must not be copied, used for manufacturing or communicated to any other person or company.